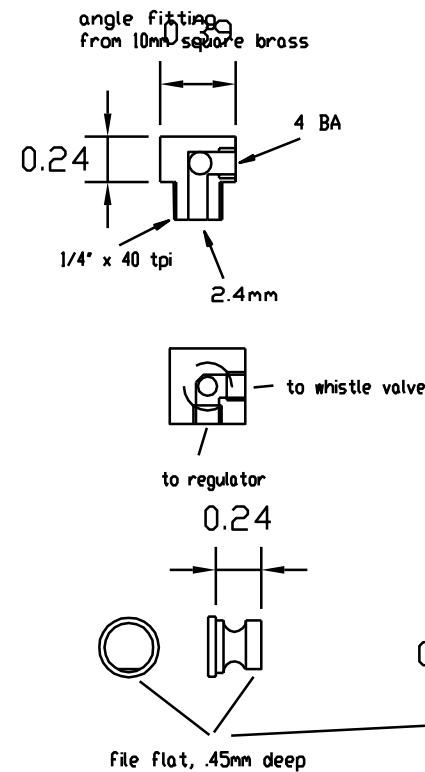


## Modified angle fitting.

Whistle valve screws into right hand side.  
Original is on boiler fittings sheet.

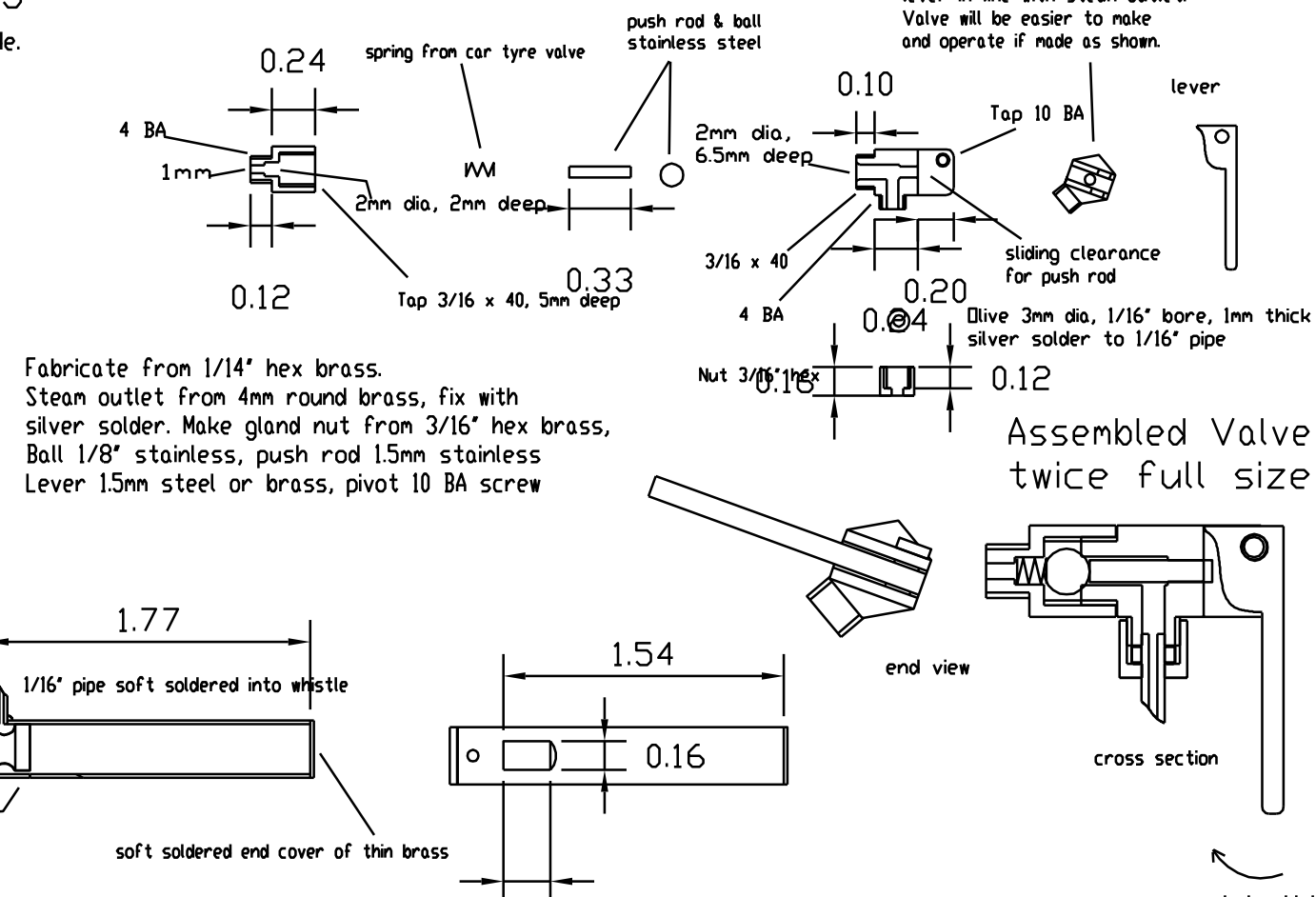


Gap plug  
turn from brass, press fit in bore  
secure with minimum of solder.

## Whistle from thin wall brass tube

Steam Whistle for Idris - fed by 1/16" copper pipe.  
Pipe tucks in behind water gauge, with whistle located diagonally below cab floor.

## Whistle Valve



Steam Whistle for de Winton  
Dave Watkins  
29/10/99

Size not changed for 7/8n2